

# Sea Glass Lane, Rye



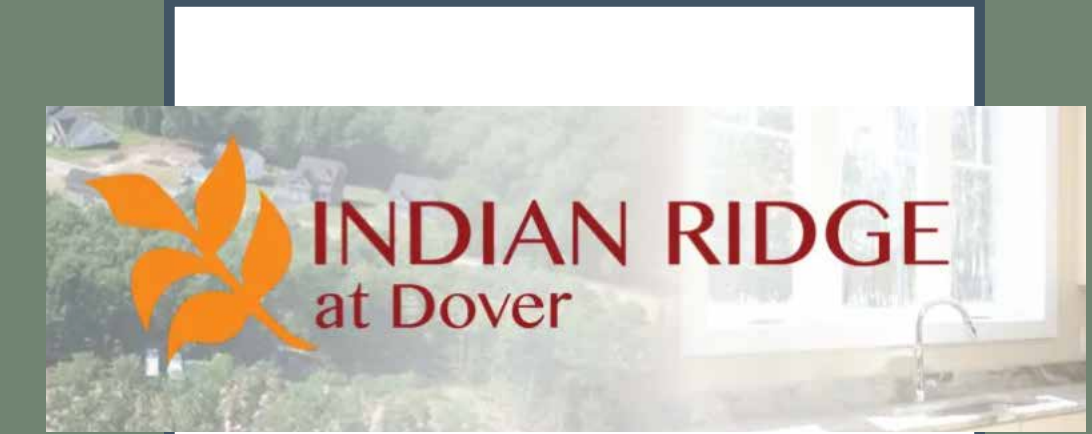
*The*  
**STONEARCH**  
*—Communities—*

Sea Glass Lane, Rye, NH  
20 single family detached condos  
62+ new home community





# Indian Ridge, Dover



Emerald Lane, Dover, NH  
54 single family homes





Welcome to Maintenance Free Living in  
**BRAMBER GREEN**  
of Greenland, NH

Bramber Valley Road  
Greenland, NH  
72 single family detached condos  
55+ new home community

# Bramber Green, Greenland





# Morgan Street, Windham



Morgan Street, Windham NH  
30 single family detached condos  
55+ new home community



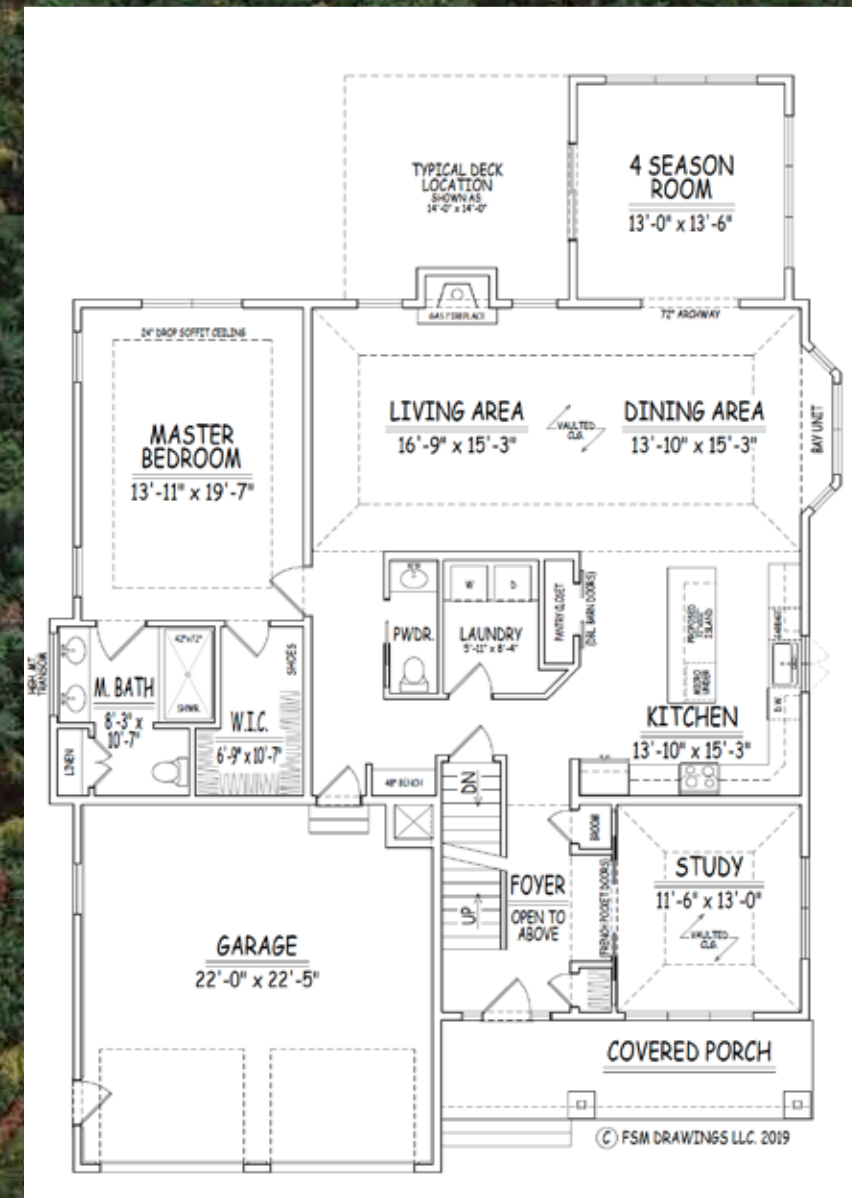
Wee Care





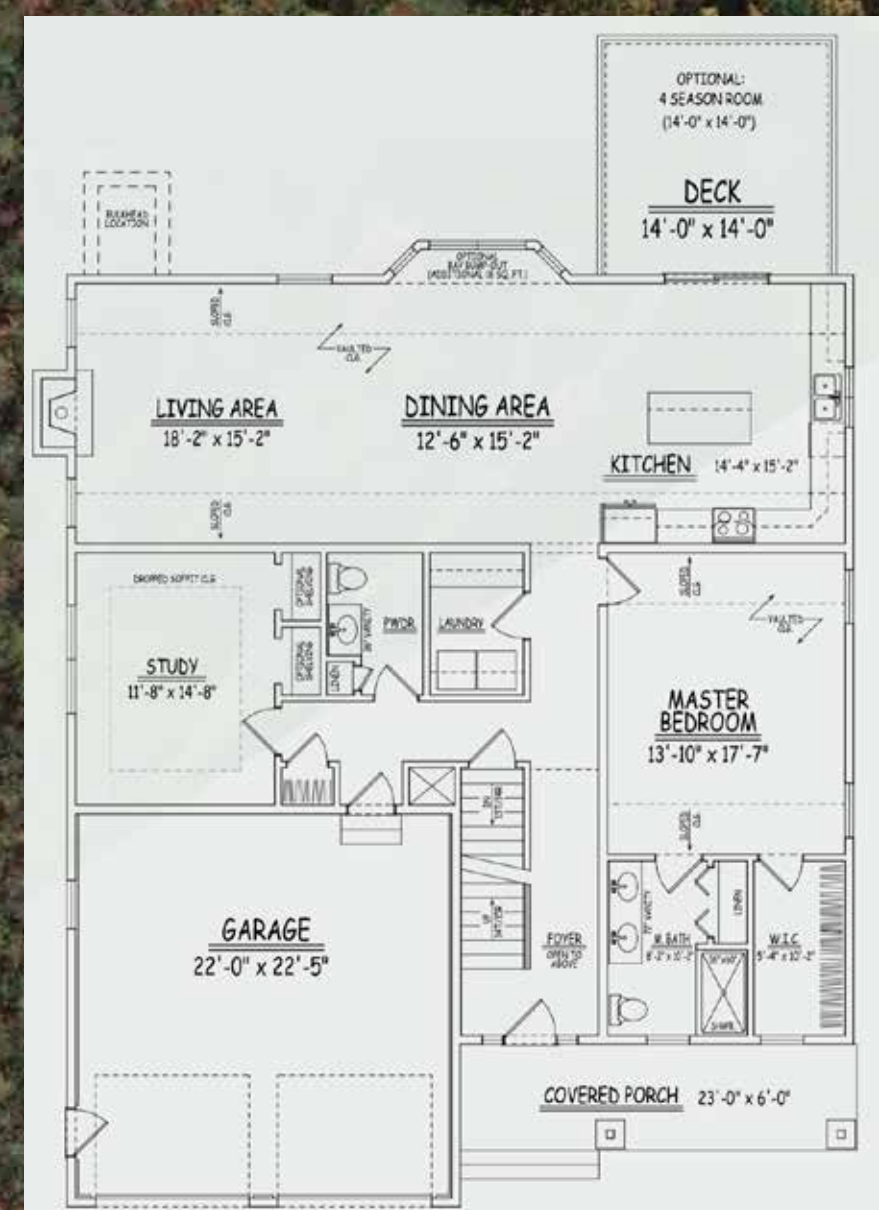
# Rollins Farm, Stratham

Rollins Farm, Stratham, NH  
 27 single family detached condos  
 25 single family homes  
 55+ new home community



New Morgan

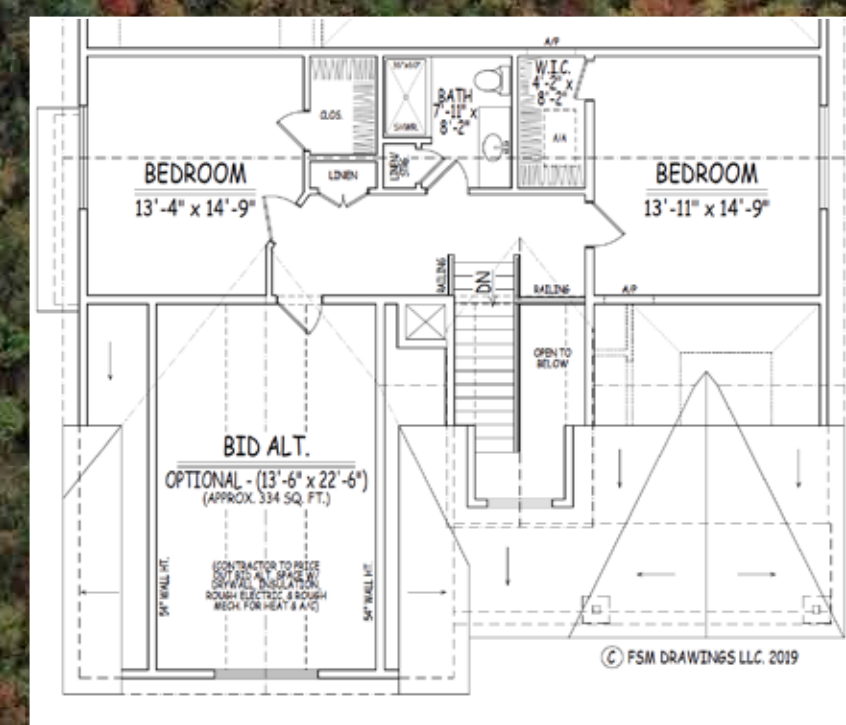
Julia



Madelyn



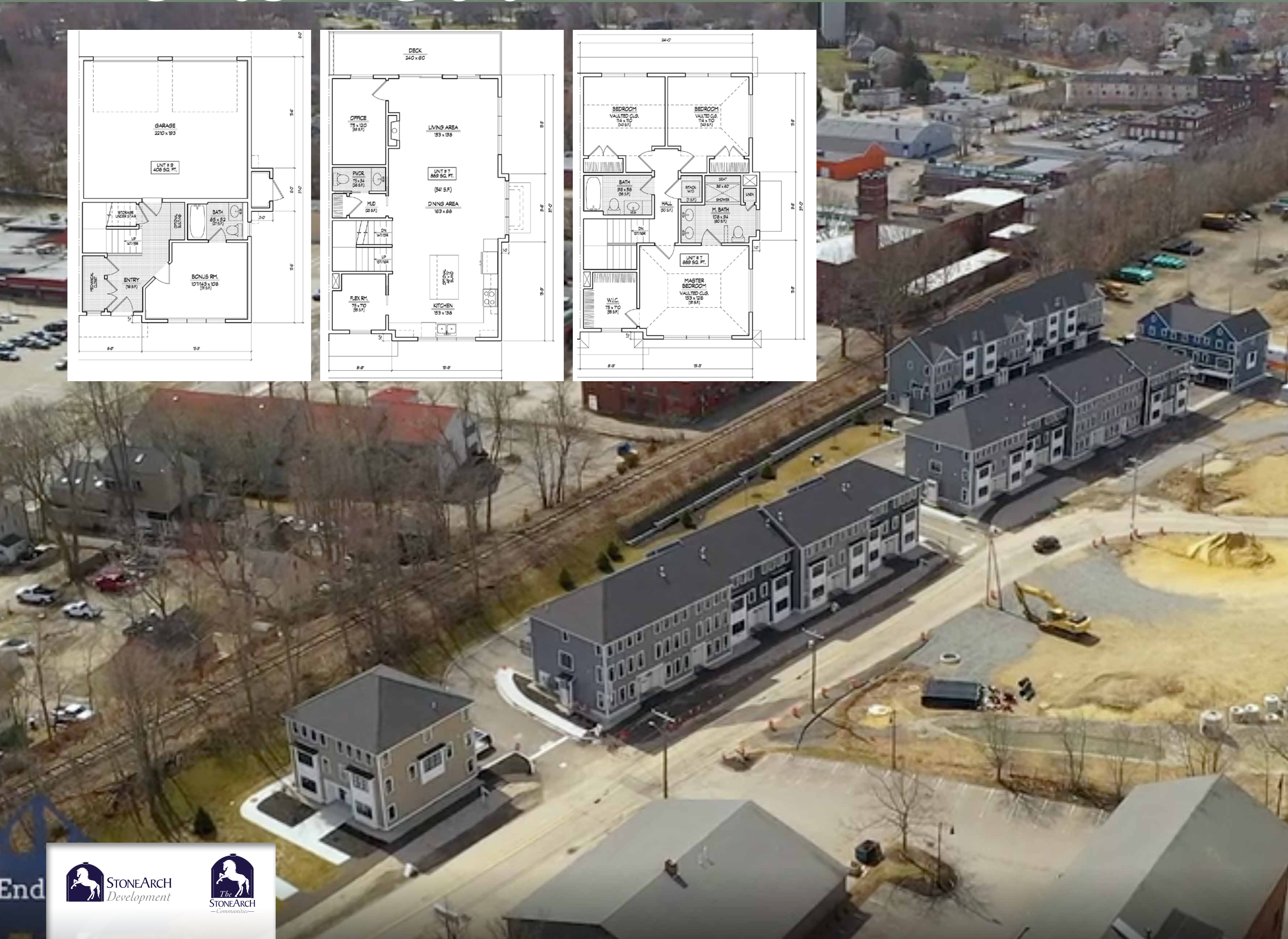
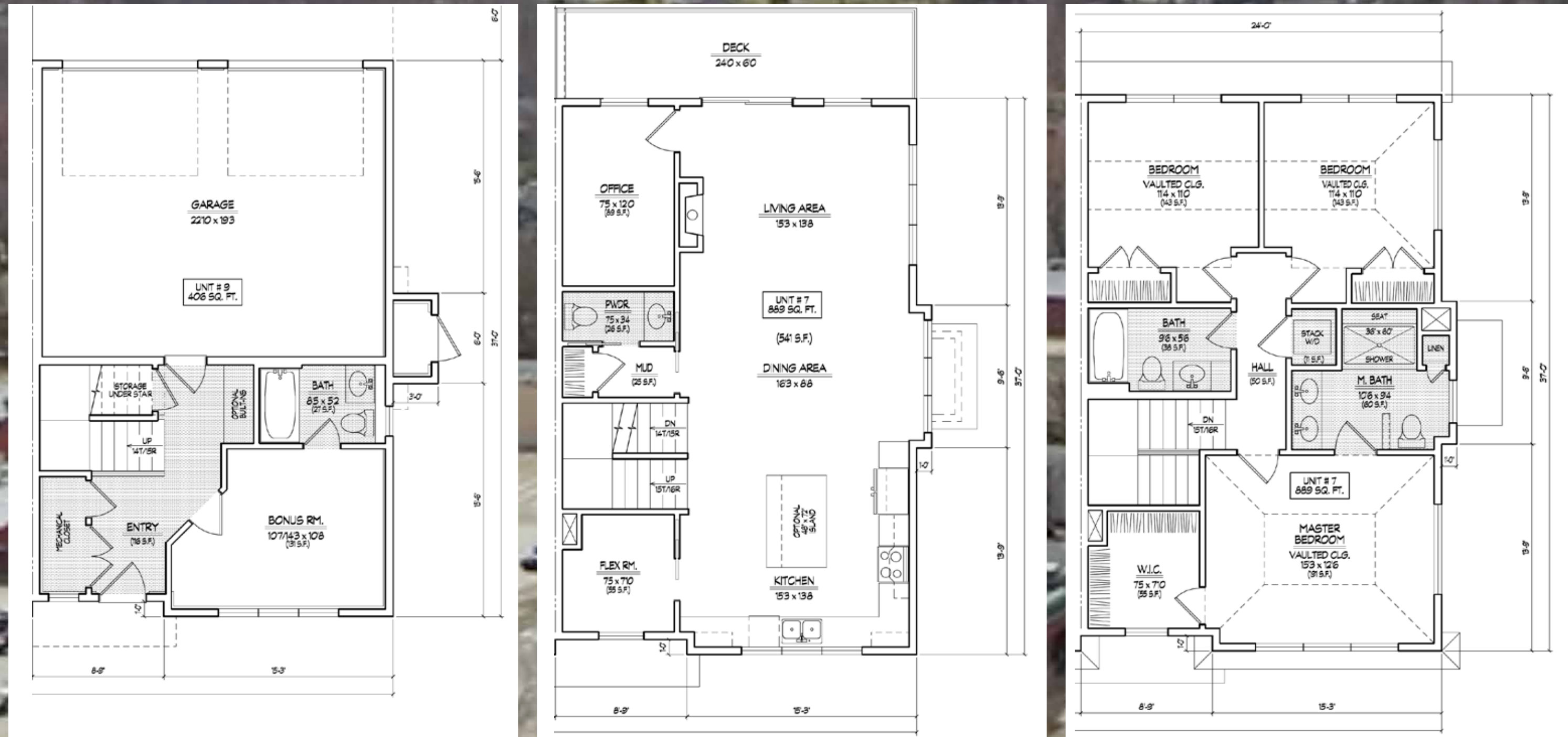
2nd Story





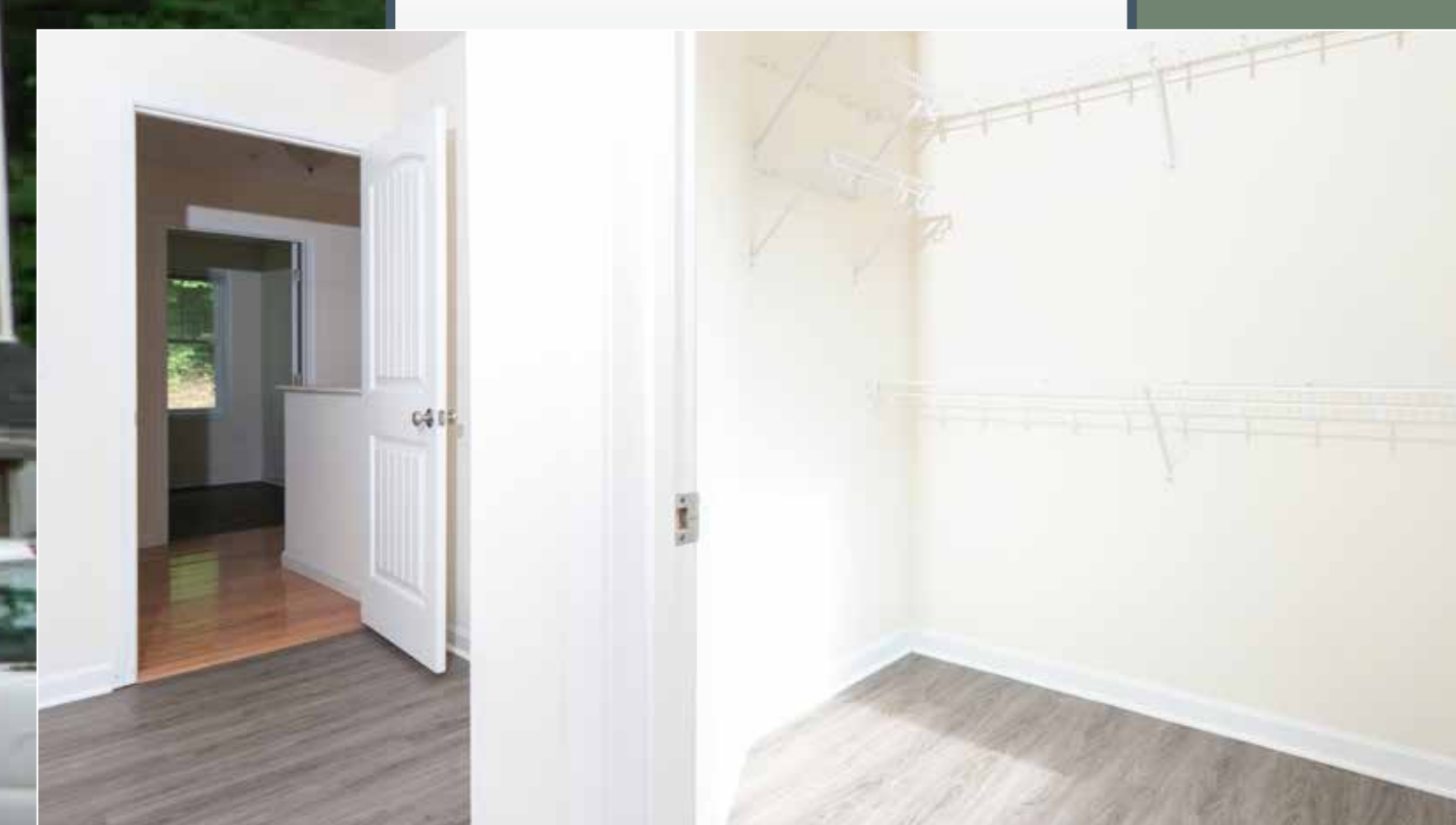
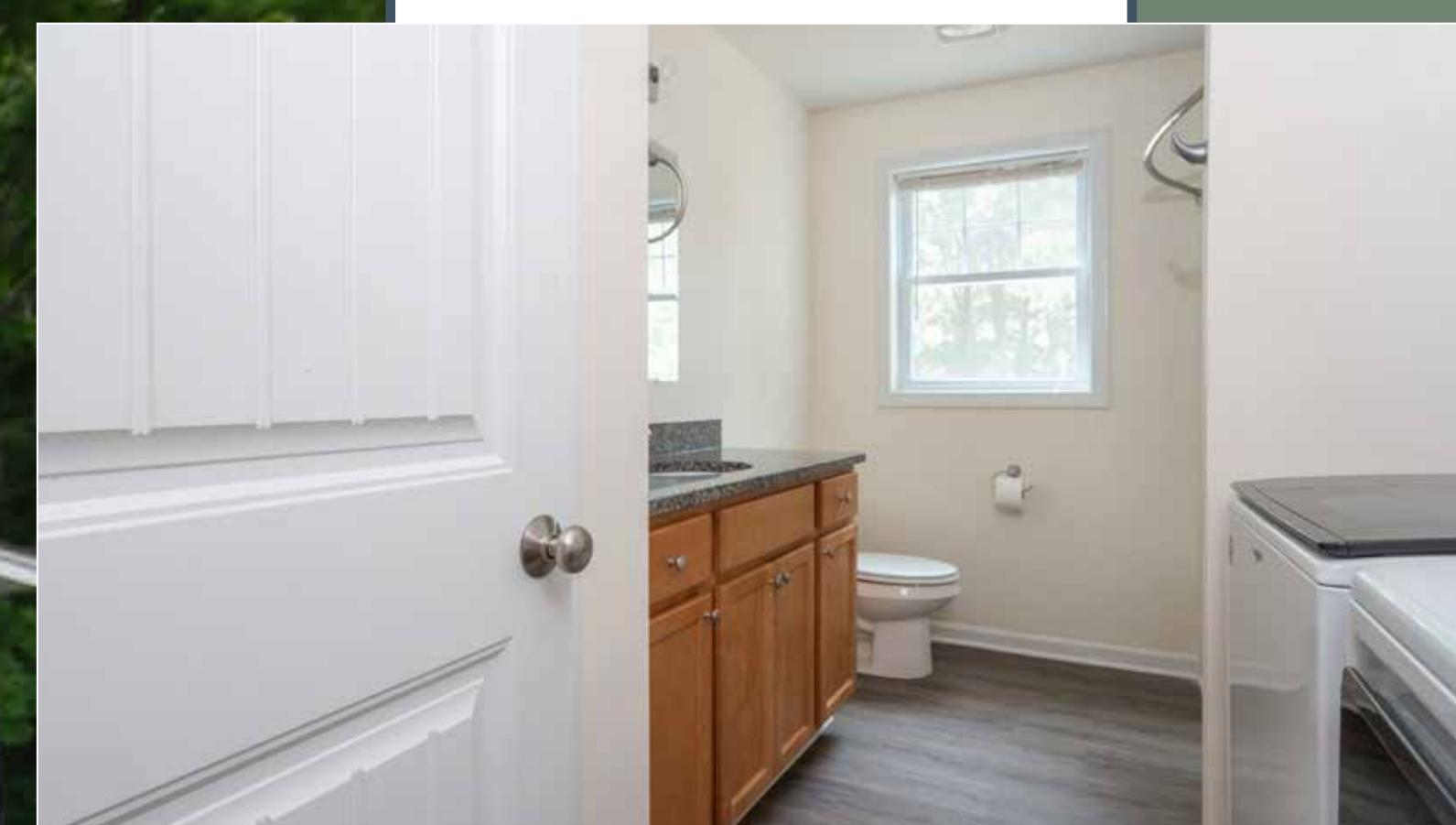
# West End Landing Portsmouth

Cate Street, Portsmouth NH  
31 single family detached town-  
home style condos  
Phase 2 in 2021 with 23 units





# Jefferson Drive, Dover



Jefferson Drive, Dover, NH  
24 rental town-homes





# Mechanic Street, Dover



Mechanic Street, Dover NH  
15 rental homes  
4 Commercial on first story





# 3rd Street, Dover



3rd Street, Dover, NH  
22 rental homes  
2 or 3 commercial on first story



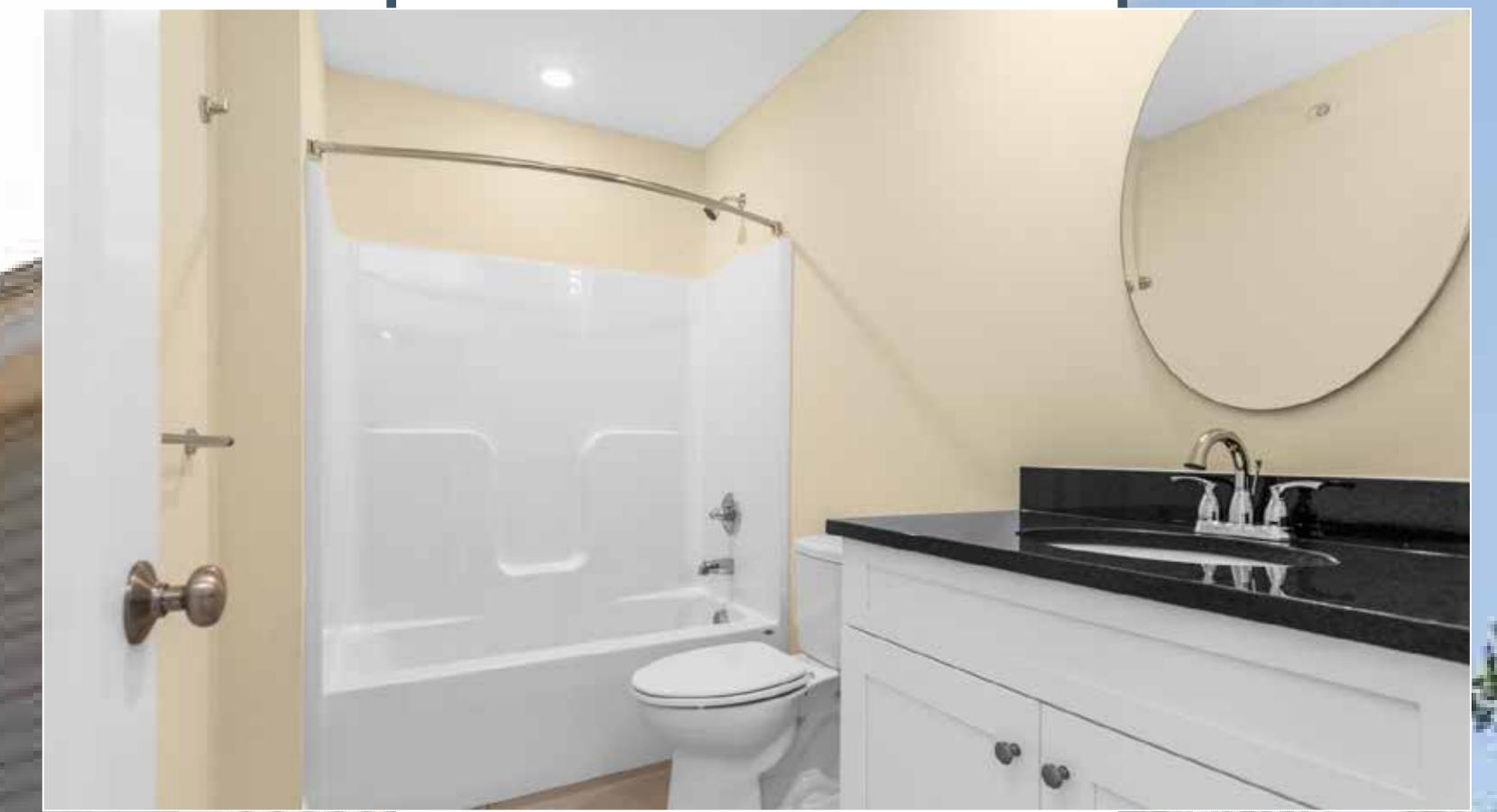


# Maple Street, Dover





# Topaz Lane, Rochester



Topaz and Tessier Drive,  
Rochester, NH  
59 rental town-homes





# Portland Ave, Dover



Portland Ave, Dover, NH  
19 rental town-homes  
10 commercial suites



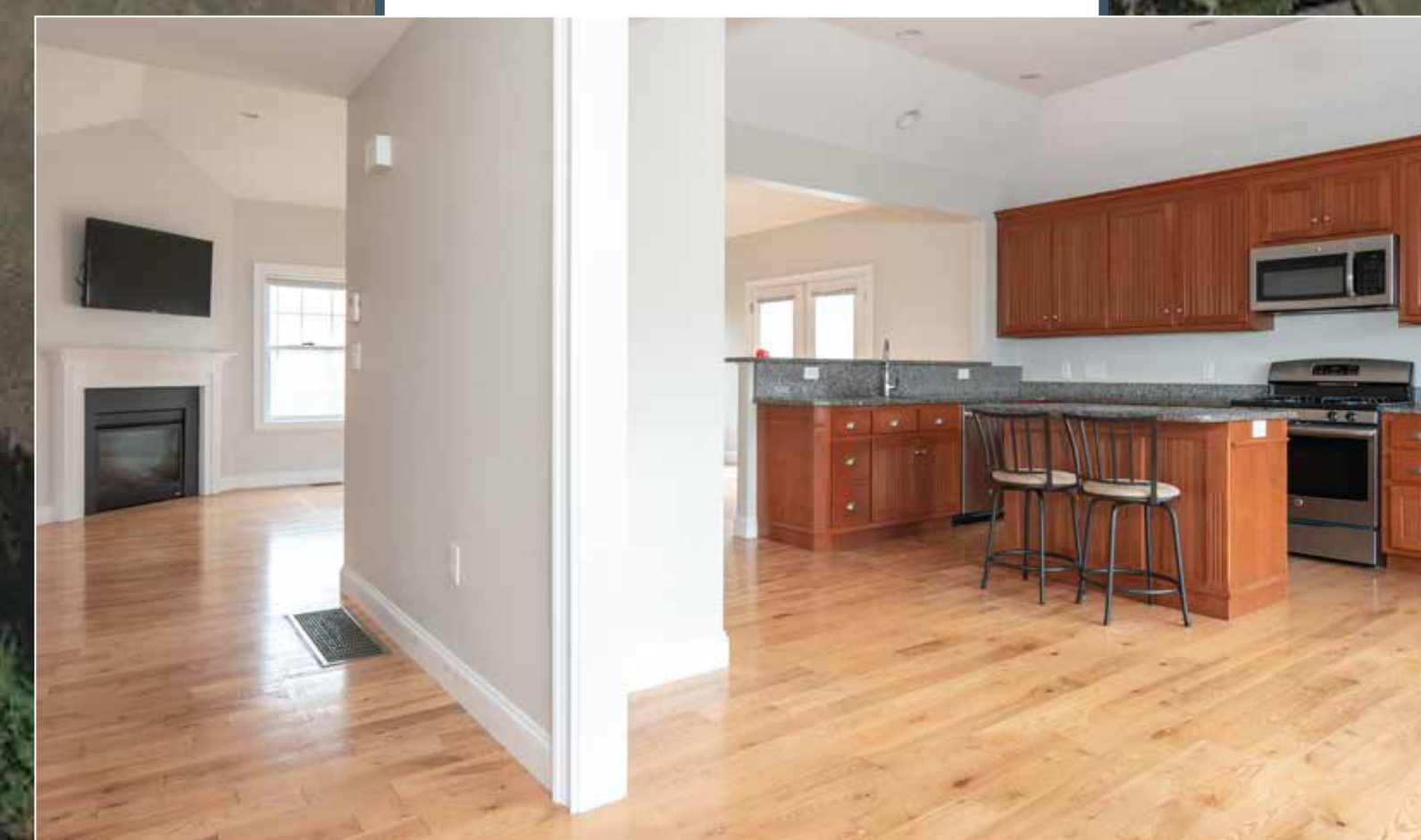


# Teresa Drive, Dover



The  
**STONEARCH**  
—Communities—

Theresa Drive, Dover, NH  
62 single family detached condos



STONEARCH  
Development



# Lucy Lane, Dover, NH

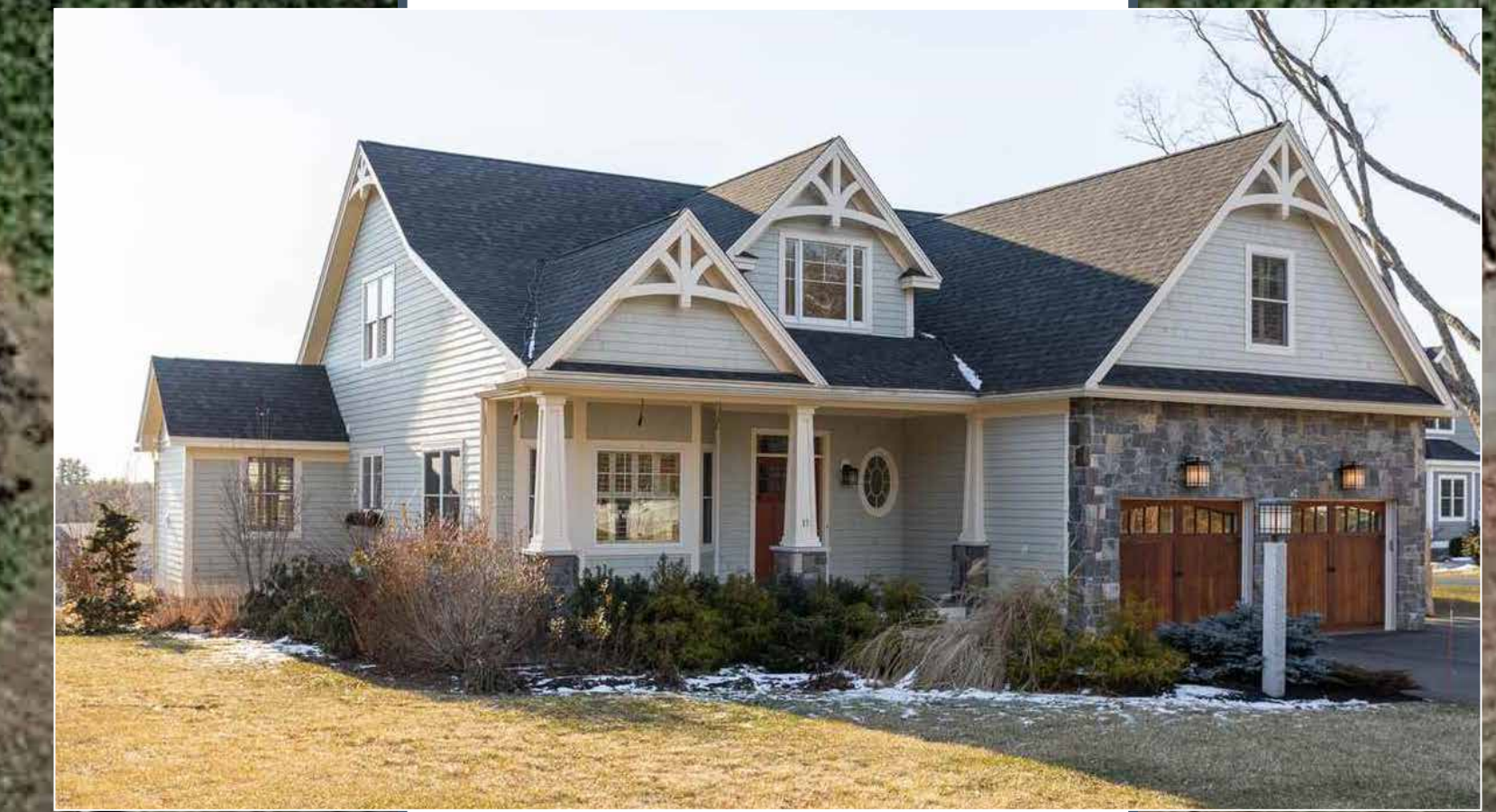
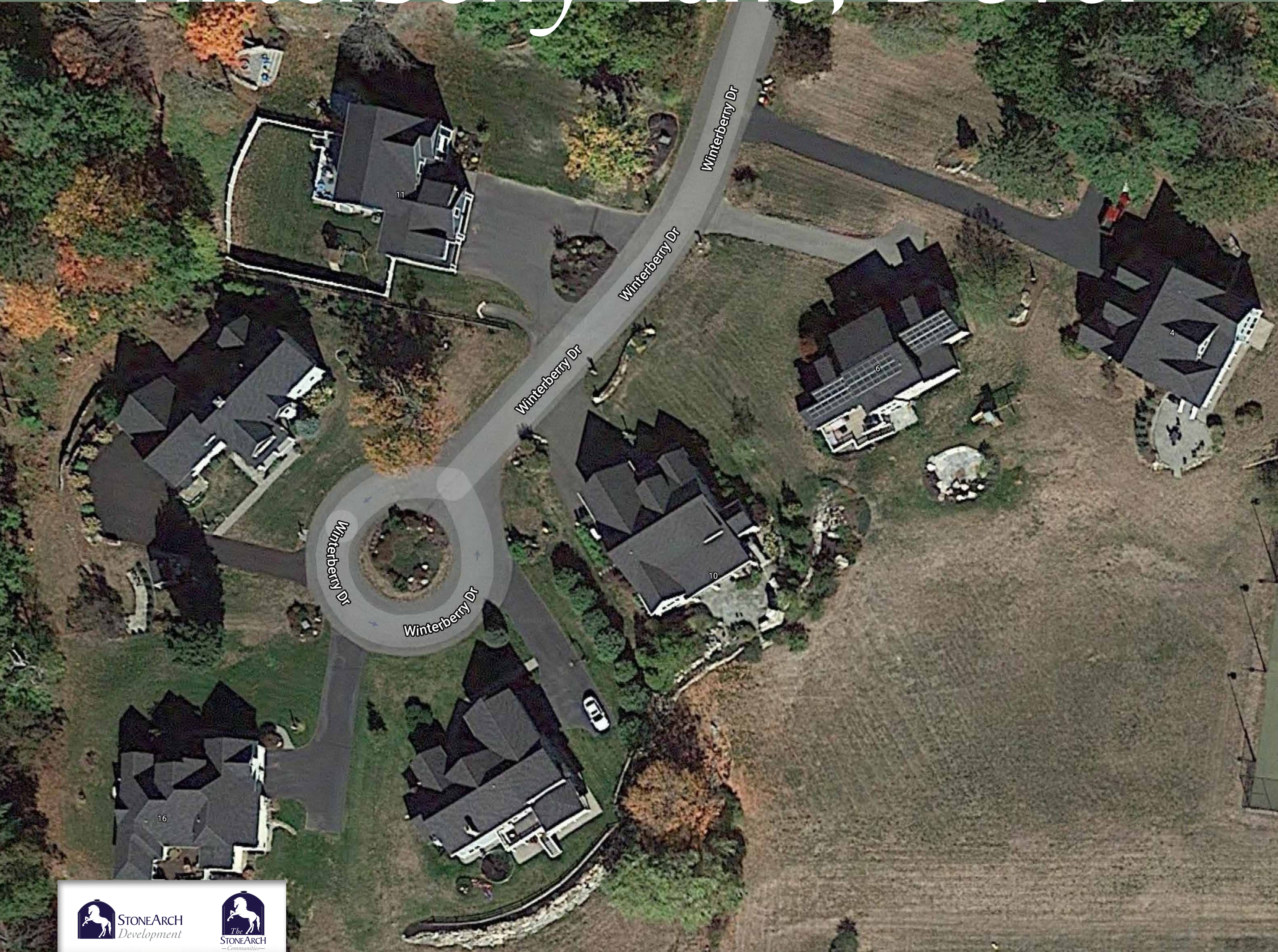
21 colonial homes with  
2 car garages





# Winterberry Lane, Dover

7 Luxury Homes on a culdesac





# Crystal Drive, Tewksbury

8 Singel Family homes

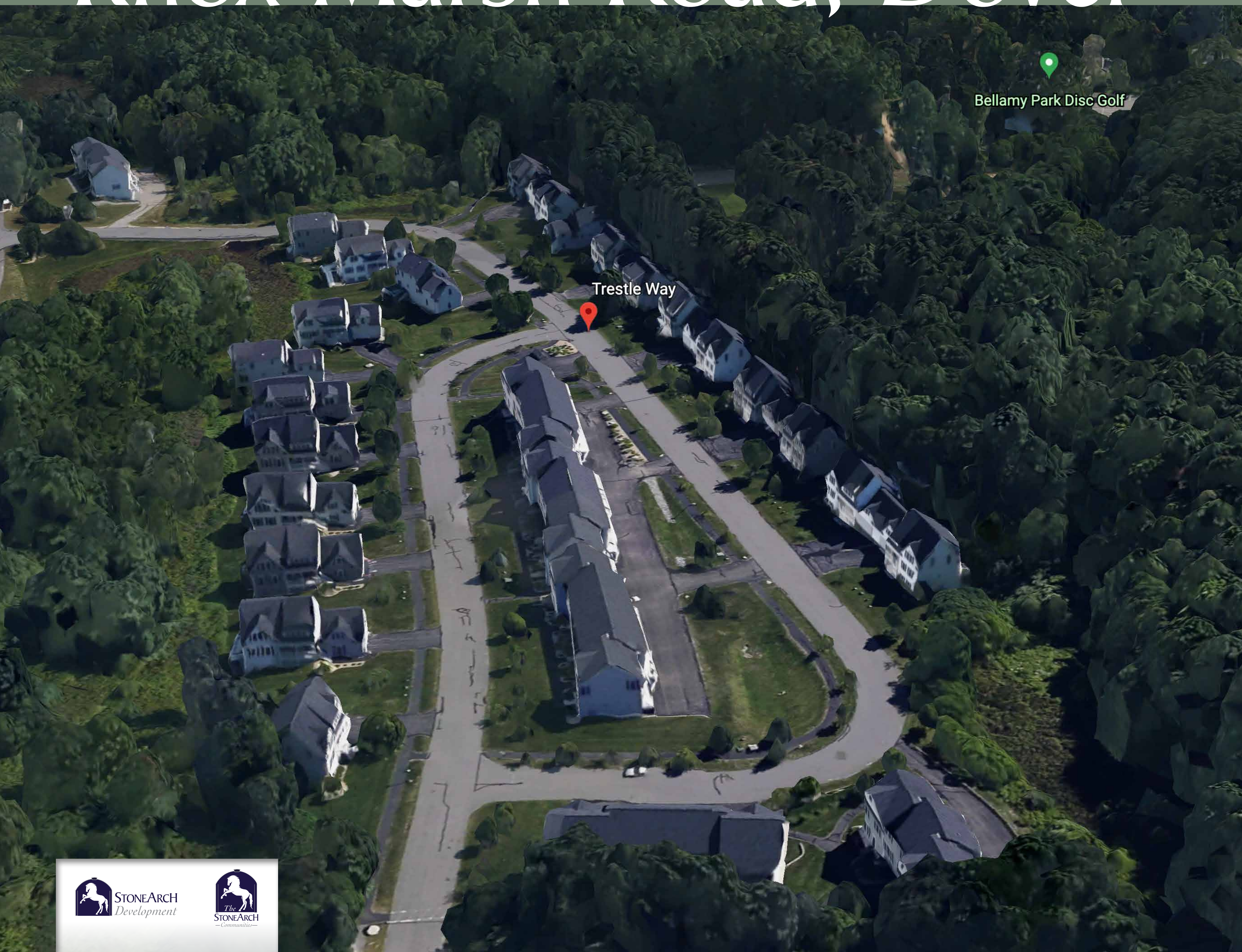




# Knox Marsh Road, Dover

Mix of single family and rentals

43.18°N, 70.89°W



Bellamy Park Disc Golf





# Main Street, South Berwick

8 Townhome Units in  
South Berwick, Maine

